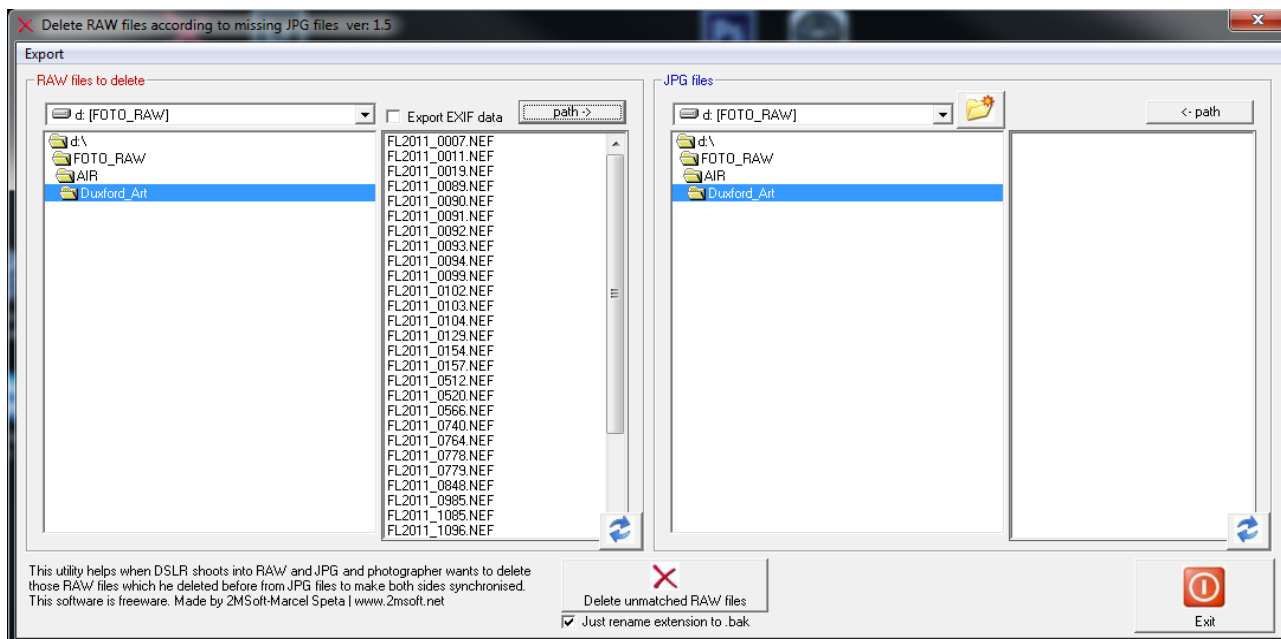


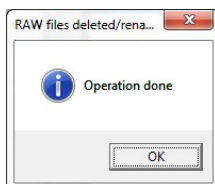
RAWDelete (+RAW2JPG functionality)

This Utility (Freeware) is to make the synchronization between JPG and RAW files easier. Folder containing JPG files is the Master. This utility makes life easier for photographers shooting in both formats RAW+JPG. Usually the Photographer makes review of the picture on JPG files and deletes the unwished ones. Now he would be forced to maintain RAW files accordingly. This utility helps to manage it automatically.



[Path] buttons copy the file path to other side (left or right) to speed up operations in case files are in same folder.

Delete unmatched RAW files Button - this performs the renaming/deletion of RAW files. This software actually works only with .NEF .CRW and .CR2 files. Utility goes thru the JPG list to match the RAW file based on the filename without its extension. RAW Files which do not have its counterpart are renamed (*.nbak, *.wbak or *.cbak) or deleted based on Checkbox checked (bellow the Button)



This Messagebox popup after operation is done, but running scripts in a background might be still running! After that you can see the result in left window and see remaining RAW files. If you want to see the latest list click on Refresh button.

Since version 1.7 there is second button to delete unmatched RAW files based on the filelist (plain .txt file generated by any application or included PhotoList.bat). This is doing the exact same thing like first button, but it doesn't depend on the physical JPG files in the folder. Just list of jpg files in text file is needed.

Note:

Since version 1.4 the utility can **export** into .JPG from the RAW file in a full resolution as it was taken by Camera! This operation is very fast. Faster than Adobe LightRoom.

User may choose for exporting the EXIF data also into separate ascii files (.asc, .txt)

Since version 1.5 the utility is capable to copy EXIF data from RAW into target JPG. If the DSLR is set properly you do not need any Adobe LR or RAW tool and can distribute your images very quickly.

INSTALLATION

Unzip the package to local drive i.e. C:\RAWDelete or C:\Program Files\RAWDelete

The Utility might have difficulties to work from Network drive, so I suggest to copy it onto local drive.

There is .INI file which may change behavior of the application. Check remarks in .ini file for more details.

ZIP Package contains necessary DLL files, but it may happen on certain PC and Operation System that this is not sufficient to work properly. If so please install the runtime package from my web site [www.2Msoft.net](http://www.2msoft.net)
http://www.2msoft.net/Download/Technologie/setup_2MRuntimeTech_2015.exe

Software is distributed "AS IS" and author doesn't take any responsibility for your damages!